

TECHNICAL PROPERTIES

Material:	aluminium, steel, stainless steel
Material thickness:	T = 1,0 - 3,0 mm
Surface finish:	anodized powder coated polished / mirror polished

DIMENSIONS

Dimension:	Width: 1.300 Length: 2.490
------------	-------------------------------

Height:	30 mm
---------	-------

FEATURES

- matching joints / continuous pattern
- repeat pattern at 2.490 mm
- folding can be added on the long sides
- different perforation options are available
- other materials, sizes & surface finishes on request

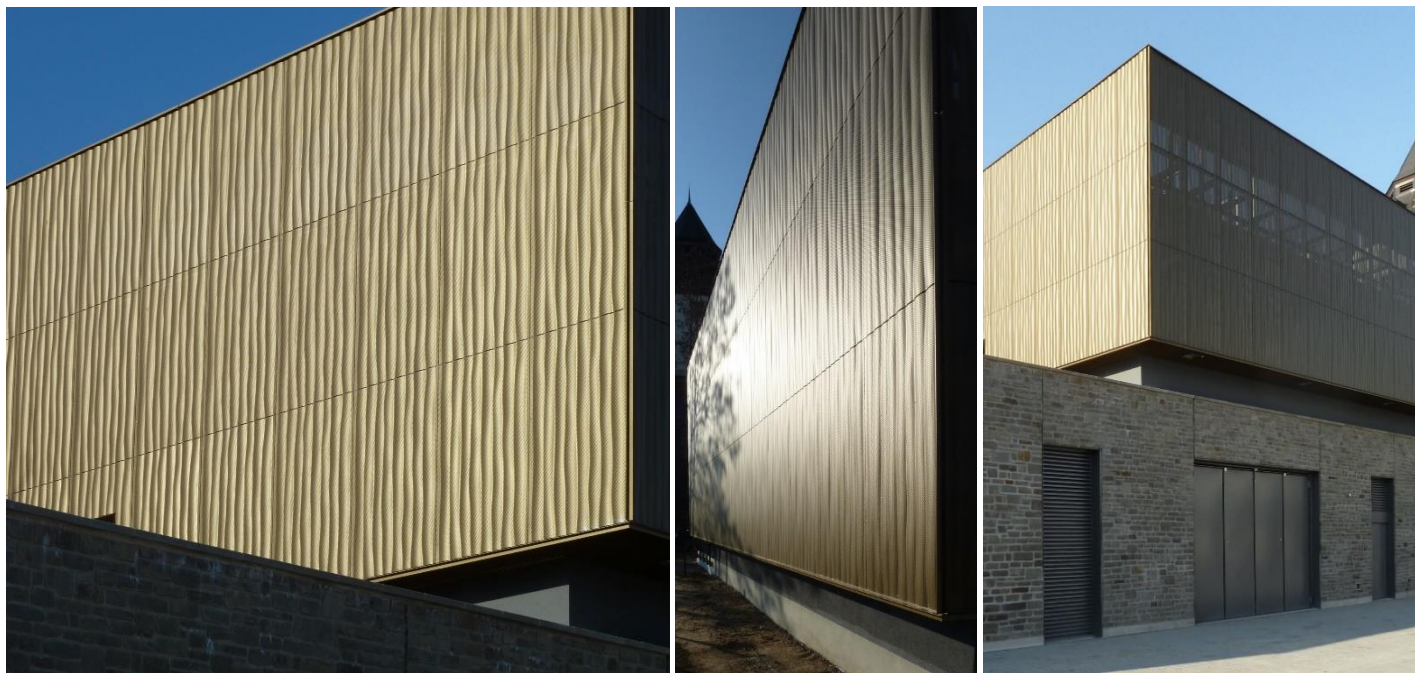
Manufacturer Contacts:

Email: info@fielitz.de | Website: www.fielitz.de

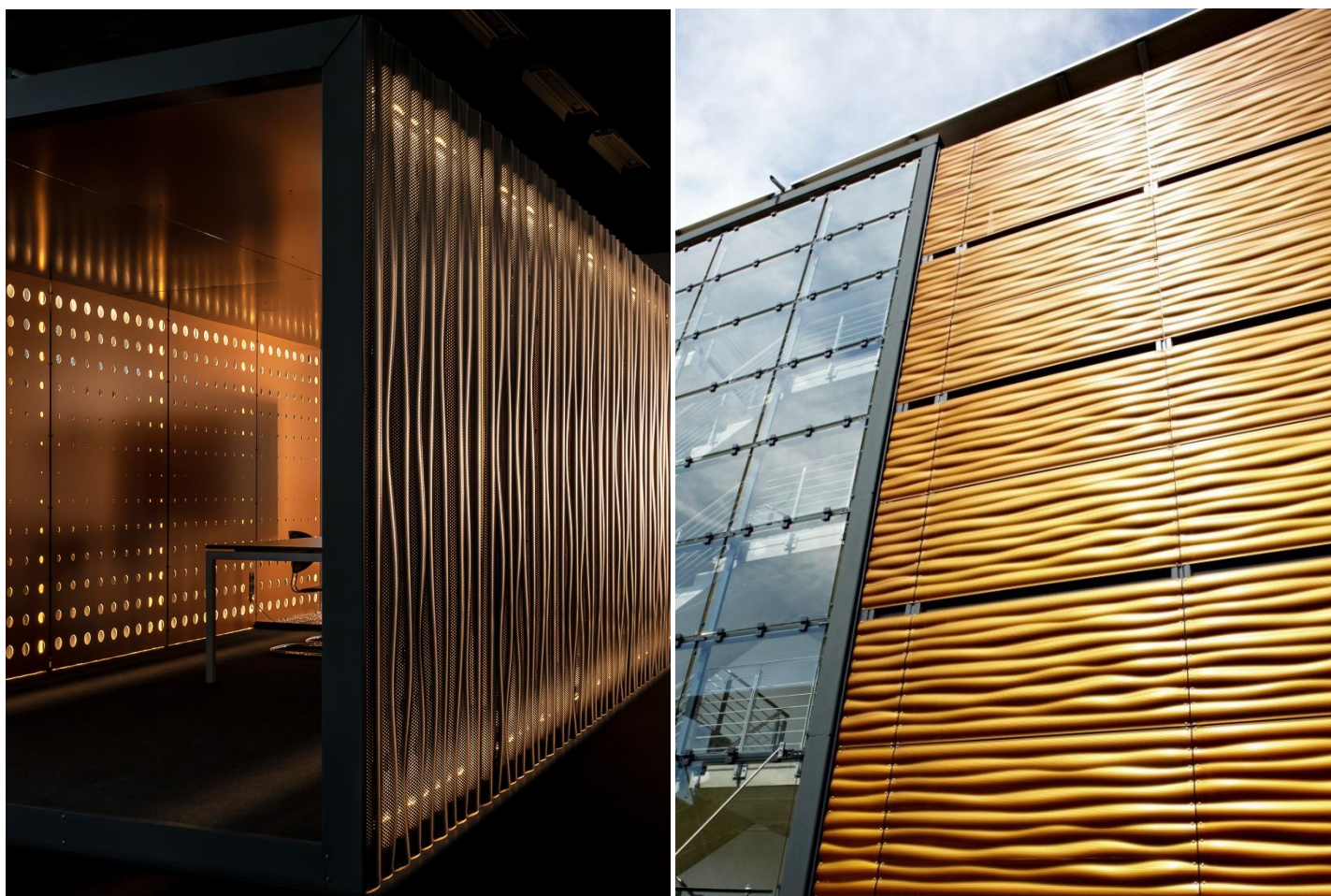
Fielitz GmbH, Im Weiherfeld 5, 85051 Ingolstadt, Germany

Tel: +49(0)841 93514 0

wall elements | ceiling elements | façades | cladding | interior and exterior design



Façade elements: Power Plant, Bad Homburg, Germany | architecture & photos: GPH Architekten



Alpewa Cube, Boyen, Italy | architecture: Alpewa | photo: Dario conti

Car park Nuremberg, Germany | JGT Architekten | photo: Goldbeck

Manufacturer Contacts:

Email: info@fielitz.de | Website: www.fielitz.de

Fielitz GmbH, Im Weiherfeld 5, 85051 Ingolstadt, Germany

Tel: +49(0)841 93514 0