

### TECHNICAL PROPERTIES

|                     |   |
|---------------------|---|
| Material:           | aluminium, copper, brass, steel, stainless steel        |
| Material thickness: | T = 0,8 - 3,0 mm  |
| Surface finish:     | anodized<br>powder coated<br>polished / mirror polished |

### DIMENSIONS

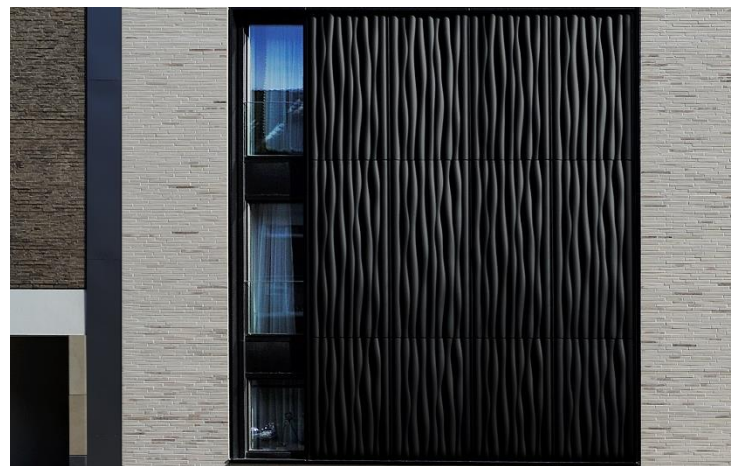
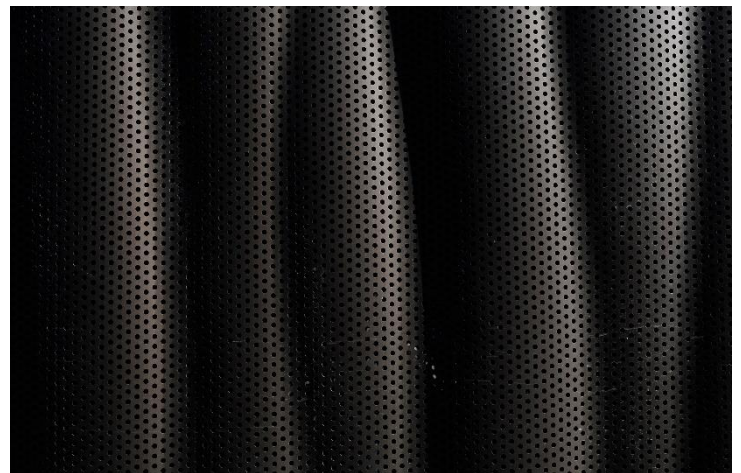
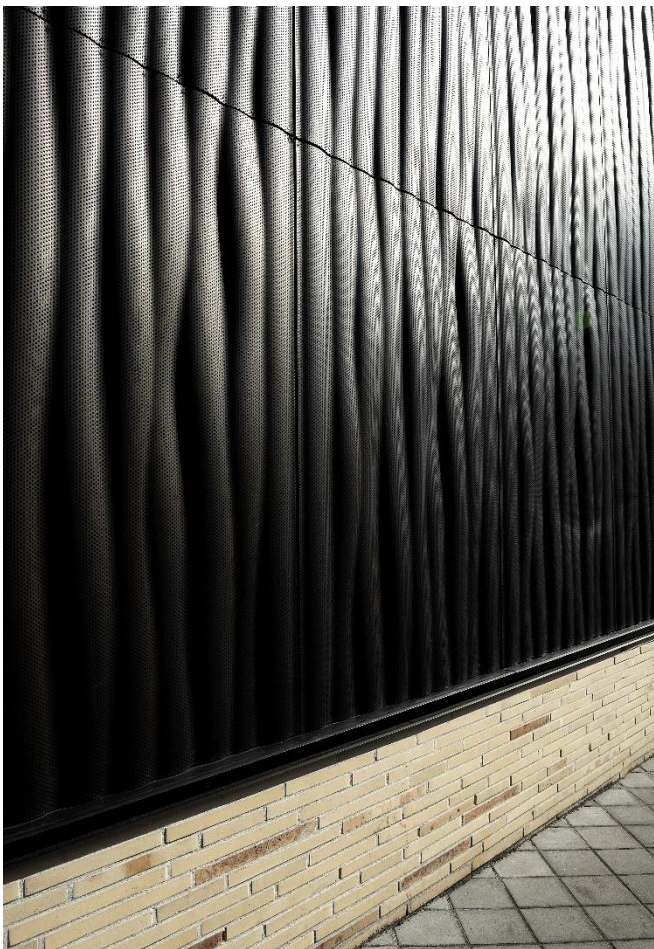
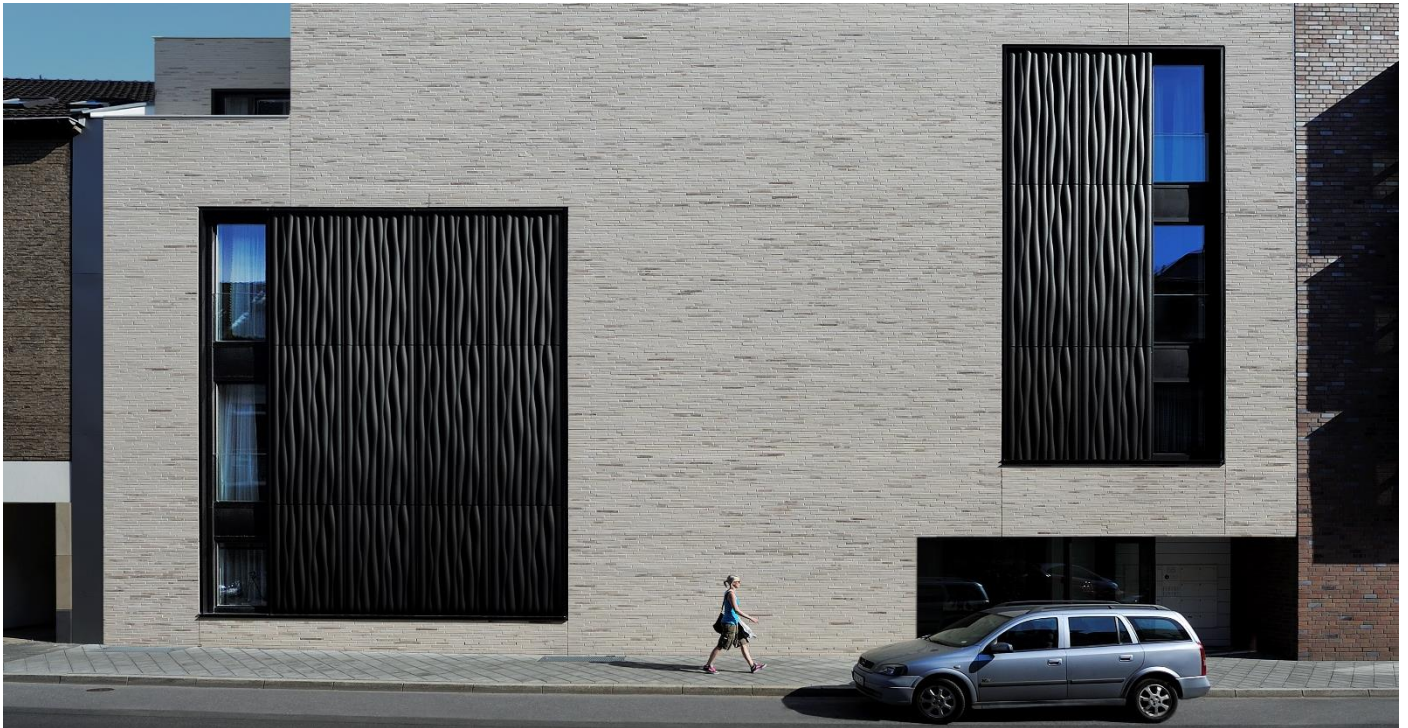
|            |                                     |
|------------|-------------------------------------|
| Dimension: | Width: 1.300 mm<br>Length: 3.000 mm |
| Height:    | 30 mm                               |

### FEATURES

- matching joints / continuous pattern
- folding can be added on the long sides at 1.300 mm
- different perforation options are available
- other materials, sizes & surface finishes on request



wall elements | ceiling elements | façades | cladding | interior and exterior design



Façade elements: Retirement home, Dueren, Germany | architecture: JSWD-Architekten | photo: Christa Lachenmaier

Manufacturer Contacts:

Email: [info@fielitz.de](mailto:info@fielitz.de) | Website: [www.fielitz.de](http://www.fielitz.de)

Fielitz GmbH, Im Weiherfeld 5, 85051 Ingolstadt, Germany

Tel: +49(0)841 93514 0