

TECHNICAL PROPERTIES

Material: aluminium, steel, stainless steel

Material thickness: T = 0,8 - 3,0 mm

Surface finish: anodized
powder coated
polished / mirror polished

DIMENSIONS

Dimension: Width: 1.150 mm
Length: 3.900 mm

Height: 30 mm

FEATURES

- folding can be added on the long sides
- matching joints / continuous pattern
- repeat pattern at 3.000 mm and 3.900 mm
- different perforation options are available
- other materials, sizes & surface finishes on request

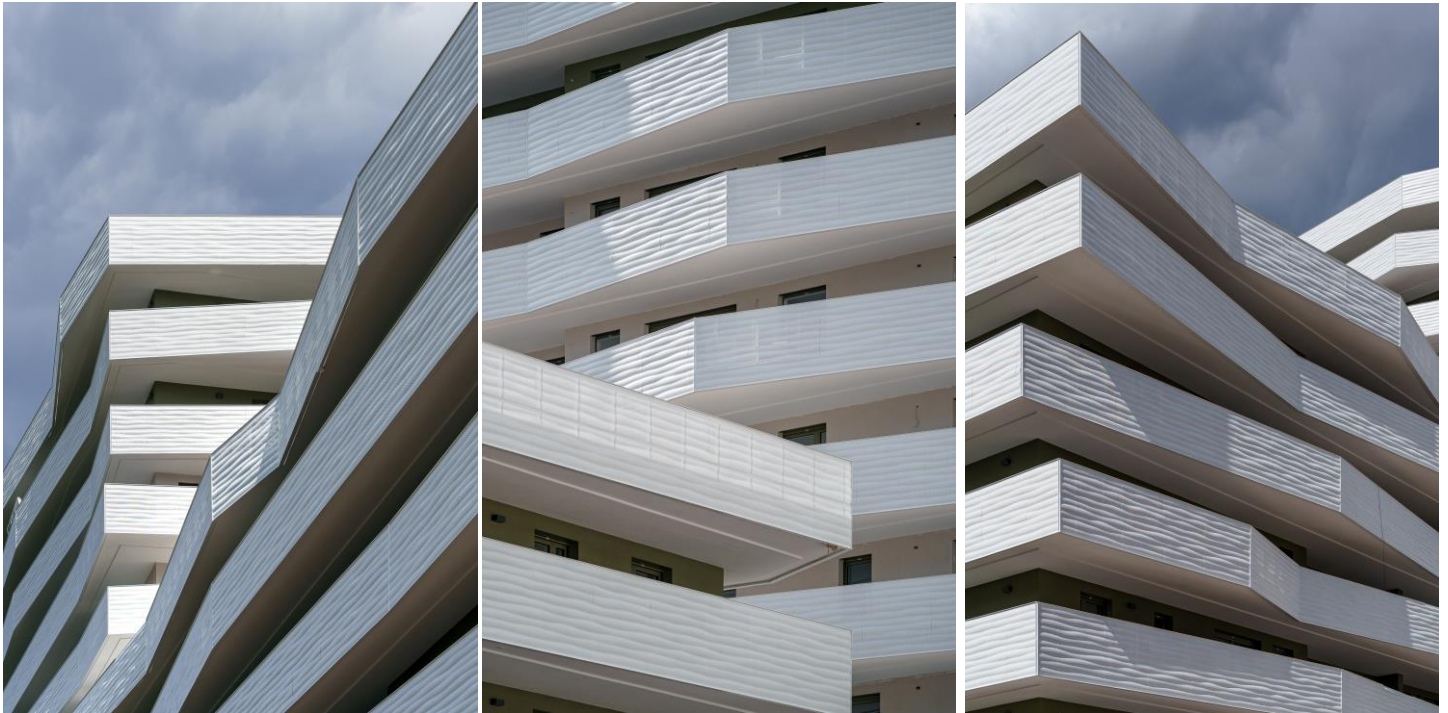
Manufacturer Contacts:

Email: info@fielitz.de | Website: www.fielitz.de

Fielitz GmbH, Im Weiherfeld 5, 85051 Ingolstadt, Germany

Tel: +49(0)841 93514 0

wall elements | ceiling elements | façades | cladding | interior and exterior design



Grieser Auen | Bozen, Italy | architecture: CDM Architetfii Associati | photos: Dario Conci, Alpewa



Seilbahn Vöran, Italy | architecture & design: Studio Willeit Niederstätter Architects | photos: Dario Conci, Alpewa

Manufacturer Contacts:

Email: info@fielitz.de | Website: www.fielitz.de

Fielitz GmbH, Im Weiherfeld 5, 85051 Ingolstadt, Germany

Tel: +49(0)841 93514 0