



### TECHNICAL PROPERTIES

Material:	steel, stainless steel, aluminium, bronze, copper, brass
Material thickness:	T = 0,8 - 3,0 mm
Surface finish:	brushed / anodized polished / mirror polished powder coated

### DIMENSIONS

Width:	1.050 mm
Length:	2.750 mm
Height:	10,0 mm

### FEATURES

- folding can be added on long sides at 1.030 mm
- repeat pattern at 2.500 mm
- different perforation options are available
- other materials, sizes & surface finishes on request

Manufacturer Contacts:

Email: [info@fielitz.de](mailto:info@fielitz.de) | Website: [www.fielitz.de](http://www.fielitz.de)

Fielitz GmbH, Im Weiherfeld 5, 85051 Ingolstadt, Germany

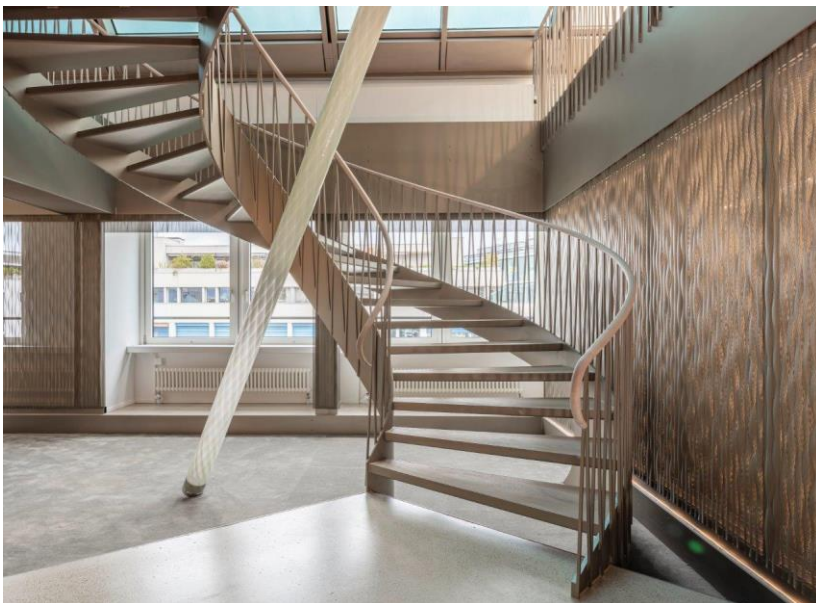
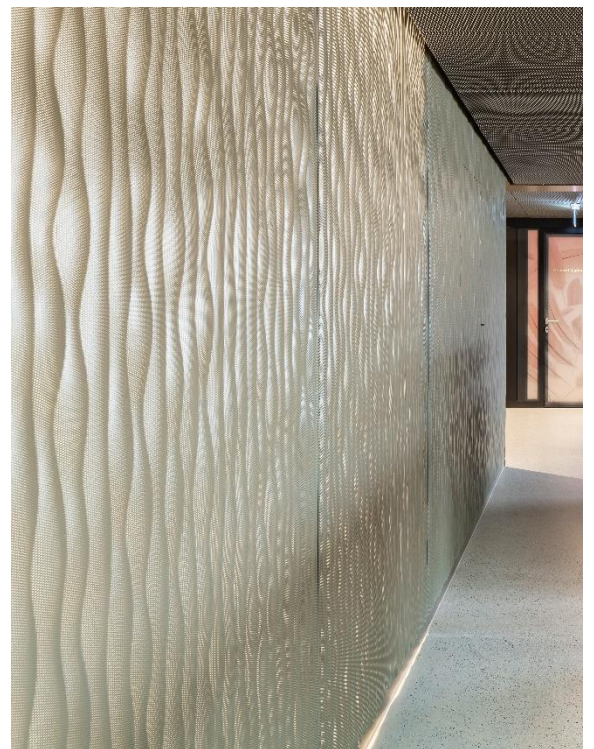
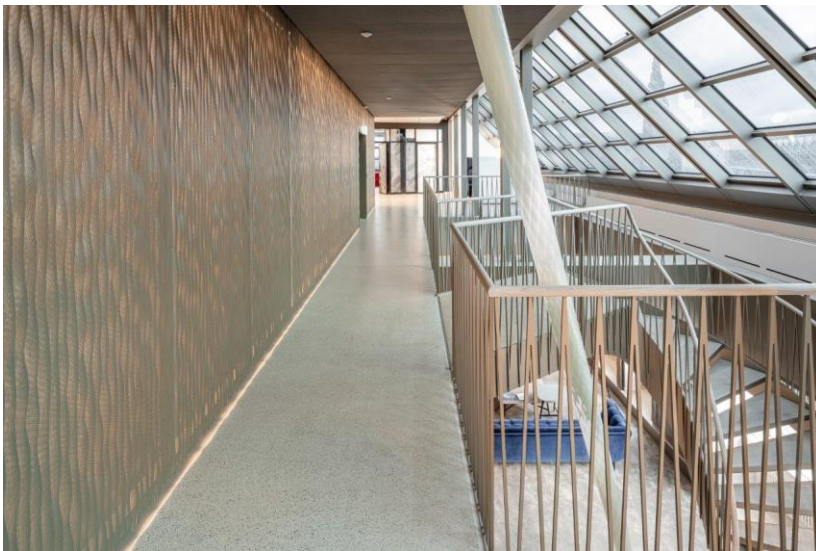
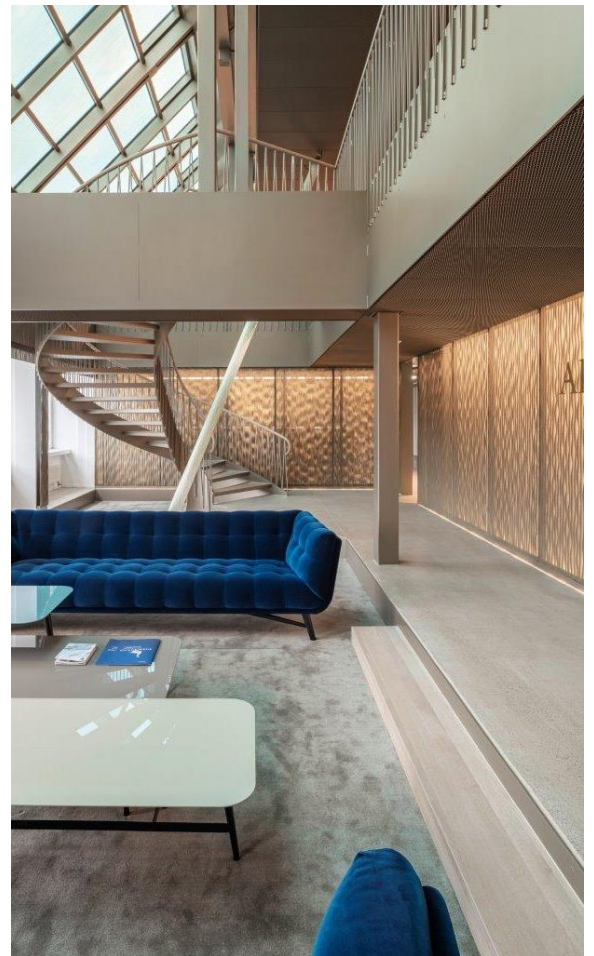
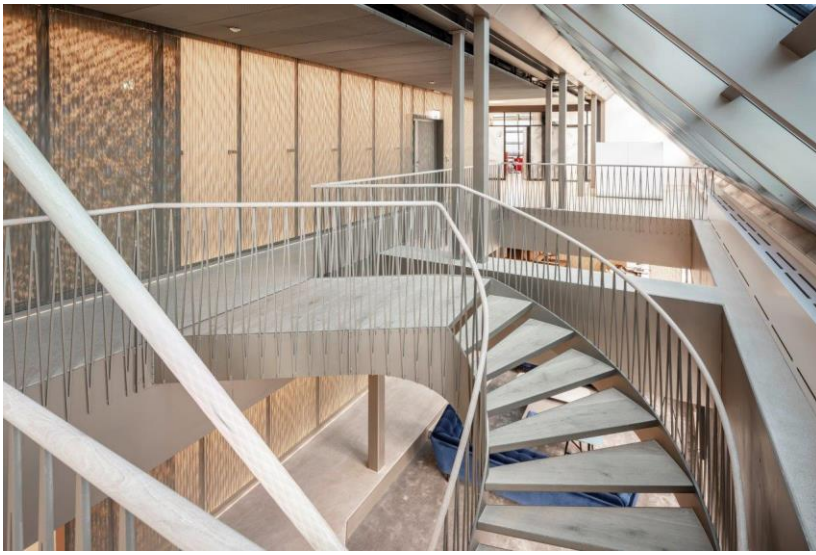
Tel: +49(0)841 93514 0

# FIELITZ

## APPLICATION AREAS

## REFERENCES

wall elements | ceiling elements | façades | cladding | interior and exterior design



Contemporary office, Zurich, Switzerland | architecture & photo: MÉPP

Manufacturer Contacts:

Email: [info@fielitz.de](mailto:info@fielitz.de) | Website: [www.fielitz.de](http://www.fielitz.de)

Fielitz GmbH, Im Weiherfeld 5, 85051 Ingolstadt, Germany

Tel: +49(0)841 93514 0